



# RESEARCHER TRAINING AND DEVELOPMENT OPPORTUNITIES

*MPLS Division Trinity  
Term 2026*

## MPLS RESEARCHER TRAINING CONTACTS



Dr Justin Hutchence FHEA he/him  
Researcher Training &  
Development Manager  
e: justin.hutchence@mpls.ox.ac.uk  
t: +44 (0)1865 282622



Louisa Trevail she/her  
Programme Manager MPLS  
Enterprising Women  
t: louisa.trevail@mpls.ox.ac.uk



James Cunning he/him  
Divisional Training Coordinator  
e: james.cunning@mpls.ox.ac.uk  
t: +44 (0)1865 282589



Hannah Ravenswood they/she  
Equality, Diversity and Inclusion  
Facilitator-Training and Development  
e: hannah.ravenswood@mpls.ox.ac.uk



Sally Charles FHEA, FEEUK  
Enterprise Programme Manager  
e: sally.charles@mpls.ox.ac.uk  
t: + 44 (0) 1865 282591



Dr Catherine Seed she/her  
Researcher Training and  
Development Officer  
e: catherine.seed@mpls.ox.ac.uk  
t: +44 (0) 1865 282088



Alison Trinder she/her  
Researcher Training and  
Development Adviser  
e: alison.trinder@mpls.ox.ac.uk



Dr Karen Brayshaw she/her  
Project Officer Mentoring  
and Communications  
e: karen.brayshaw@mpls.ox.ac.uk  
t: +44 (0) 1865 282536

## HOW TO BOOK

### *Researcher Training & Development Courses*

Our courses this term are a mixture of online and in person.

- Click on the course titles in the online brochure which will take you to the course booking page.
- Visit [www.mpls.ox.ac.uk/training](http://www.mpls.ox.ac.uk/training) and click on 'Course Bookings', which is a list of all upcoming courses sorted by date.

Most of our courses are booked via the Cosy booking system, but some may require application forms and / or deposits.

## ED&I TRAINING PROGRAMME

Equality, diversity and inclusion courses take place online and are bookable via the ED&I web site.

<https://www.mpls.ox.ac.uk/equality-diversity-and-inclusion-in-mpls/mpls-ed-i-training-programme>

## ADDITIONAL RESOURCES

We also have a range of self-access online resources for DPhil students and research staff.

<https://www.mpls.ox.ac.uk/training/resources-for-researcher-and-career-development>

## BROCHURE KEY

*RS:* research staff, post-docs or early career researchers.

*DPhil:* DPhil students or post-graduate researchers.

*All:* All researchers.



*In Person*



*Online*

## THE COVER

*This term's cover is inspired by Kit Gallagher's research (Mathematical Institute), which uses mathematics and deep reinforcement learning to design personalised treatment programmes for cancer patients.*

All photography by John Cairns  
Photography



*Disclaimer: some courses may be changed from their advertised setting due to unforeseen circumstances.*

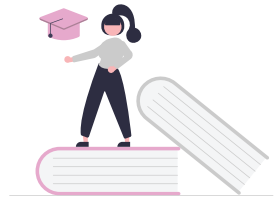
# MPLS Training and Development 2024/25 Academic Year



Course Attendances\*

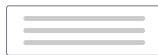
2,019

*\*staff and students from any division*



Course Offered

119



Average Course Rating

86%

# Participant Quotes

**"THIS COURSE HELPED  
ME VIEW THE VIVA AS A  
POSITIVE EXPERIENCE."**

*Participant, Viva Practice  
and Preparation*

**"I APPRECIATE ALL OF THE  
DIFFERENT STRATEGIES AND  
A BETTER COMPREHENSION  
OF THE ... ISSUES BEHIND  
SOME ASPECTS."**

*Participant, Time Management*

**"THE INSIGHTS AND  
STRATEGIES SHARED IN  
THE COURSE WERE  
INCREDIBLY VALUABLE,  
ESPECIALLY THE PRACTICAL  
EXAMPLES AND PROJECT  
EXERCISES."**

*Participant, Project Management:  
The Essentials*

**"A PHENOMENAL  
PROGRAMME THAT  
ALLOWED ME TO  
ESTABLISH CONNECTIONS...  
AND EXPLORE DIFFERENT  
CAREER PATHWAYS."**

*DPhil, SeedWISE*

**"I FEEL THAT MANY THINGS  
HAVE BEEN DEMYSTIFIED  
ABOUT THIS WORK, SO  
MANY THANKS."**

*Participant, Podcast Your Science*

**"RISINGWISE HAS  
BROADENED MY  
PERSPECTIVE AND SPARKED  
MY IMAGINATION ABOUT  
FUTURE POSSIBILITIES."**

*Participant, RisingWISE*

*DPhil*

## **SEEDWISE**

*20 April-8 June*

SeedWISE is an enterprise development programme for women\* DPhil students working in science, technology, engineering, mathematics and medicine (STEMM). The programme offers an interactive mix of reflection, exploration and action. Participants build confidence, develop collaboration and communication skills, and learn enterprise thinking while joining a supportive cohort and accessing resources through the dedicated online learning hub.

*Introduction*  *Mon 20 April 16.00-17.00*

*Day 1*  *Mon 27 April 10.00-16.00*

*Day 2*  *Mon 18 May 10.00-16.00*

*Day 3*  *Mon 8 June 10.00-16.00*

*\*We also welcome non-binary people who are comfortable in a space that will discuss women focused experiences.*

RS

## OPTIMISE YOUR TIME AT OXFORD

*Wed 22 April 12.00-14.00*

Congratulations, you have got a research post at Oxford. But, what next?

How does a new researcher manage their time at Oxford? This session explores what it means to be a post-doctoral researcher, including the opportunities available and the constraints that may arise. It outlines the support offered to help researchers make the most of their time at the University. Attendees will hear from the Careers Service, Research Services, the Oxford Research Staff Society, and representatives for Public Engagement & Impact, Research Integrity, and Enterprise.

RS

## HOW TO PEER REVIEW JOURNAL PAPERS

*Thu 28 April 09.30-12.30*

The ability to review manuscripts should be a core skill of every research scientist. By participating in exercises and discussions the attendees will learn how to review manuscripts quickly and effectively.



*DPhil*

## **THREE MINUTE THESIS TRAINING SESSION**

*Thu 30 April 10.00-12.00*

The Three Minute Thesis (3MT™) competition challenges doctoral candidates to present a compelling spoken presentation on their research topic and its significance in just three minutes to a non-specialist audience. This course helps them prepare for the competition and ensure that they have the best chance possible to represent Oxford nationally.

*All*

## **THESIS AND REPORT WRITING**

*Tue 5 May 09.30-13.30*

Designed for DPhil and postdoctoral researchers this in-person course helps participants manage thesis, paper and report writing effectively while meeting deadlines. It explores project planning, document structure, logical argument, academic style and practical writing techniques. Participants also work collaboratively to critique a short paper and reflect on scholarly writing practice.

*All*

## **BEING AN EFFECTIVE BYSTANDER**

*Tue 5 May 10.30-11.30*

This session introduces participants to the principles of effective bystander action and explores ways to challenge behaviours or practices that may disadvantage members of the University community. Guided by facilitator Hannah Ravenswood, attendees develop greater confidence in recognising problematic situations and responding constructively. Open to all staff and students.



All

## INTERVIEWING FOR PODCASTS 🎙️

Thu 7 May 09.30-12.30

This hands-on training session supports participants in navigating the world of podcast interviews. It covers interview preparation, developing a question line, finding an authentic voice, and practicing active listening.

Participants are paired up to conduct short interviews with one another, recorded over Zoom. The group then listens back to the recordings and workshops them collectively, offering constructive feedback.

The course is designed for anyone wishing to develop interviewing skills as a presenter and is also valuable for those preparing to appear as a guest on a podcast.

All

## EXPLORING AND OVERCOMING IMPOSTER PHENOMENON 🧑

Mon 11 May 9.30-12.30

This workshop provides a supportive space for participants to explore imposter phenomenon, understand why it arises, and reflect on its effects on their work and wellbeing. Through guided activities, they examine common experiences of self-doubt and learn practical strategies to manage these feelings and build confidence in academic and professional settings.

All

## SCOPUS SEARCHING FOR MPLS

Tue 12 May 10.00-11.00

Learn how to use Scopus effectively to support a high-quality literature review. This interactive session covers building precise search strategies, using advanced Scopus features, refining and analysing results, identifying open access content, and saving or exporting searches to support efficient, reproducible research across disciplines and career stages in practice contexts.

All

## CULTIVATING RESILIENCE AND SELF-CARE FOR OURSELVES AND OTHERS

Tue 12 May 10.30-11.30

This interactive session explores the meaning of resilience and self-care, offering practical strategies to strengthen well-being. Participants will learn tools to manage challenges effectively and support others in maintaining balance. Ideal for anyone seeking to build emotional strength and foster a supportive environment in academic and research settings.

All

## GROW: BUILDING SOCIAL VENTURES: LESSONS FROM OXFORD UNIVERSITY INNOVATION

Tue 12 May 12.00-14.00

Join Philippa Christoforou, Social Venture Lead at Oxford University Innovation, for an inspiring GROW session on building businesses that create positive social and environmental impact. Discover practical strategies for turning research into ventures that tackle global challenges and learn how to embed purpose and sustainability into your entrepreneurial journey.

RS

## GET THAT FELLOWSHIP

Wed 13 May 09.30-12.30

This session guides participants through the key stages of applying for research fellowships, outlining the experience, qualities, and preparation that strengthen an application. Attendees learn how to navigate the University systems and access available support. A current fellowship holder shares insights from their own application journey. The session also includes opportunities to practice interview techniques, helping participants build confidence and improve their chances of success.

All

## **NON MEDICAL SYSTEMIC REVIEWS - PART I**

*Wed 13 May 14.00-15.30*

Systematic reviews are a powerful tool for synthesising and evaluating evidence from published research. They can provide a reliable evidence base for future research and policy makers. This session introduces systematic reviews in the context of non-medical research.

All

## **DIFFICULT CONVERSATIONS AND THE IMPORTANCE OF GIVING AND RECEIVING FEEDBACK**

*Thu 14 May 10.00-11.00*

Learn practical strategies for giving and receiving feedback and understand how avoiding it can lead to difficult conversations. This session, led by the MPLS Resolution Service, helps managers, group leaders, and supervisors build confidence in navigating challenging discussions and fostering open, constructive communication within teams.

All

## NON MEDICAL SYSTEMIC REVIEWS - PART II

Wed 20 May 14.00-15.30

This session covers developing your systematic review search and selecting sources for peer-reviewed and grey literature.

Advanced techniques for refining your literature search string using Boolean logic, truncation and controlled vocabularies will be discussed. The literature screening process will be explained with reference to the ROSES and PRISMA guidelines. The remaining stages of data extraction and synthesis will be outlined along with sources for further guidance.

All

## SCIENTIFIC WRITING: CORE SKILLS

Thu 21 May 09.30-17.00

This one-day course provides a sound grounding in the core skills needed to produce accurate and effective scientific writing. The course will include:

- Critique of readability in relevant papers.
- Use of tenses in academic papers.
- Writing with impact.
- Concise writing.
- Grammar and proofreading.
- Scientific table and chart technique.

All

## PODCAST YOUR SCIENCE

Thu 21 May 09.30-16.30

Led by journalist Emily Elias, this hands-on course teaches Oxford researchers to plan, record, and edit engaging science podcasts. Participants learn storytelling techniques, audio editing, and how to share their work with wider audiences, gaining practical skills to communicate complex research through compelling, accessible audio content.



All

## INTRODUCTION TO PRESENTATION SKILLS

Tue 26 May 09.30-12.30

This course is designed for individuals with little or no experience in giving presentations. It covers key principles of planning and delivering effective talks, while building confidence. Participants will learn to engage audiences using various techniques, understand the importance of preparation, and practice delivering short presentations with constructive feedback.

All

## PROJECT MANAGEMENT: THE ESSENTIALS

Wed 27 May 09.30-16.00

This course provides participants with a practical project-management toolbox they can apply in their daily work. Throughout the session, they manage a project of their own, using techniques in project initiation, stakeholder and risk management, time estimation, and planning. By the end, participants understand the value of effective planning, can use essential tools, estimate timelines realistically, and develop the core skills needed to become capable and confident project managers.

All

## RISINGWISE - THE RESEARCHER'S PATH TO VENTURE LEADERSHIP

Wed 27 May 14.00-16.00

As part of OxTech week this interactive workshop helps women researchers at Oxford explore how their academic expertise can translate into entrepreneurial or industry leadership. Through female founder insights and guided reflection, participants gain clarity on motivations, strengths, and next steps for their careers.

All

## TELLING STORIES THAT MATTER: COMMUNICATING YOUR RESEARCH THROUGH STORY

Thu 28 May 10.00-16.00

This course, led by storyteller Robert Holtom, helps participants apply narrative techniques—such as character, conflict, structure, and description—to communicate scientific work more effectively. These skills support scientists in:

- Communicating research to diverse audiences.
- Enhancing presentation skills.
- Telling scientific stories across different media.

All

## ACADEMIC WRITING WITH AI

1,8,15 & 22 June – all sessions on Monday, from 10.30-12.30

The course invites participants to unlock the potential of AI to enhance academic writing through a four-session programme offered by the University of Oxford's Language Centre. Designed specifically for Oxford MPLS students and staff, the Academic Writing with AI course provides a structured approach to integrating AI tools effectively at each stage of the writing process.

All

## SCIENTIFIC WRITING: GETTING YOUR PAPER PUBLISHED

Tue 2 June 09.30-17.00

This course guides participants through the key elements of constructing a strong academic paper. It covers why and how to publish, effective paper structure, writing titles and abstracts, open-access requirements, impact metrics, ways to accelerate publication, and strategies for promoting published work. Participants also learn how to navigate peer review and respond to reviewers.

All

## RESEARCH DATA MANAGEMENT

Tue 2 June 12.30 - 14.00

Research data is often at the heart of scientific projects, it's what you spend hours in the lab generating or in the field collecting. It forms the basis of your analysis and underpins your arguments in papers and theses.

In this session we introduce RDM and the practical skill of developing Data Management Plans to manage your own data successfully.

All

## STAKEHOLDER MAPPING FOR POLICY ENGAGEMENT

Tue 2 June 14.00-16.00

This workshop helps researchers and DPhil students identify and map the policymakers and organisations connected to their research. Using stakeholder-analysis frameworks and interactive exercises, participants learn to evaluate and prioritise relevant actors across government and related sectors. They also gain a clearer understanding of the value of systematic stakeholder analysis and the resources available to support effective policy engagement.

All

## GET THAT JOB

Wed 3 June 09.30-13.00

This interactive workshop helps researchers strengthen their job applications by developing core skills in CV presentation, approaching employers, writing effective covering letters, and preparing for interviews. Participants learn practical strategies to present their experience confidently and professionally, gaining a clearer understanding of how to improve applications and succeed in recruitment processes.

RS

## HOW TO PREPARE FOR A CAREER DEVELOPMENT REVIEW, FOR REVIEWEES

Thu 4 June 09.30-11.00

This practical session helps research staff understand the wider career context at Oxford and beyond, highlighting how a constructive Career Development Review can support ongoing professional growth. It enables participants to identify the skills and abilities they need to develop and offers guidance on strengthening these areas so they can approach their next CDR with clarity, confidence, and a clear sense of purpose.



*DPhil*

## **VIVA PREPARATION AND PRACTICE**

*Tue 9 June 10.00-13.00*

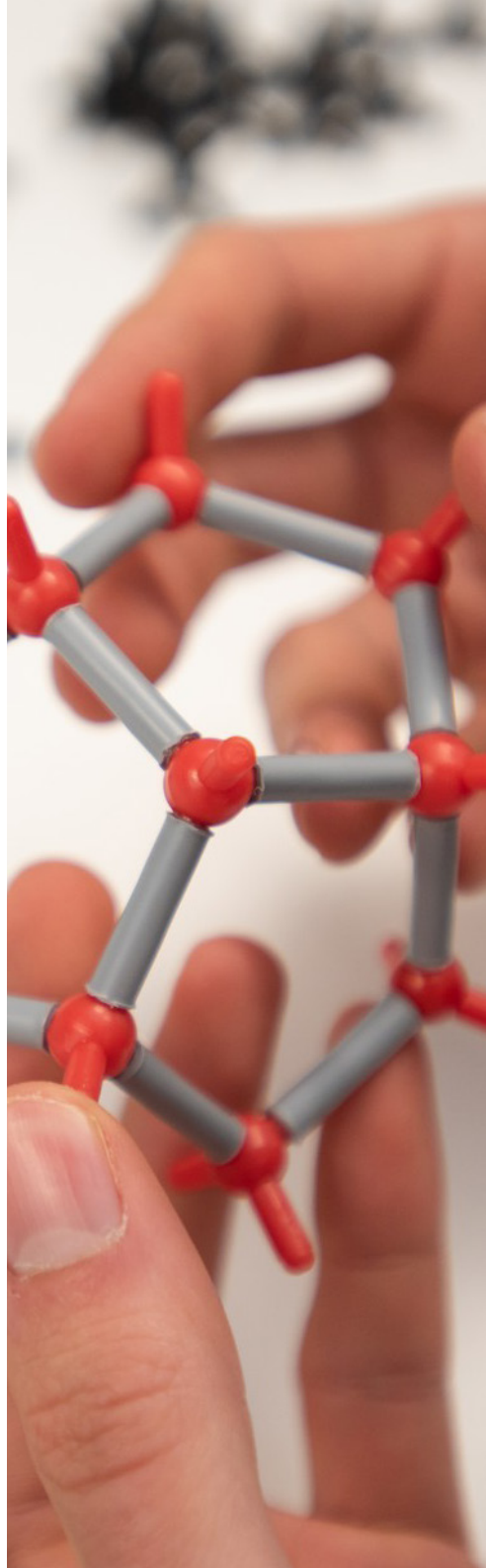
This participative workshop provides doctoral students in the third year and above with information about the viva, guidance on planning a pro-active approach to it, and opportunities to practice. The course will look at the rules and expectations of the viva exam and identify and practise practical ways to prepare.

*DPhil*

## **YOU AND YOUR SUPERVISOR**

*Tue 9 June 14.00-17.00*

This session supports DPhil students in developing effective working relationships with their supervisors. It introduces key responsibilities, relevant University regulations, and practical strategies for proactive communication. Participants learn how to manage supervisory interactions constructively and how to access additional sources of help and support throughout their doctoral journey.



RS

## GET THAT FELLOWSHIP

*Wed 10 June 09.30-12.30*

This session guides participants through the key stages of applying for research fellowships, outlining the experience, qualities, and preparation that strengthen an application. Attendees learn how to navigate the University systems and access available support. A current fellowship holder shares insights from their own application journey. The session also includes opportunities to practice interview techniques, helping participants build confidence and improve their chances of success.

All

## TIME MANAGEMENT

*Wed 10 Jun 10.00-12.00*

An essential skill for researchers. Issues covered will include work-life balance, planning, prioritising, the need to differentiate between importance and urgency, and using a range of strategies and time-saving ideas.

*All*

## **GETTING STARTED IN PUBLIC AND COMMUNITY ENGAGEMENT WITH RESEARCH**

*Thu 11 June 14.00-15.00*

This online session introduces public engagement with research, exploring its purpose, benefits, and diverse approaches. Led by Dr Catherine Seed, it's ideal for DPhil students and postdoctoral researchers new to engagement. Participants gain insights, practical tips, and awareness of local and national opportunities to begin their public engagement journey.



*DPhil*

## **COMPLETING YOUR DPhil**

*Tue 16 Jun 09.30-12.30*

This workshop supports DPhil students approaching the final stages of their doctorate by helping them plan their thesis completion and prepare effectively for the viva. Participants learn about strong thesis structure and writing, what examiners look for, and how to manage their time. The session also provides guidance, FAQs, and opportunities to discuss concerns.

*RS*

## **NETWORKING: A STRATEGIC APPROACH**

*Wed 17 June 09.30-15.00*

This in-person course, led by Dr David Jones, helps research staff develop effective networking strategies. Participants will explore the benefits of networking, learn practical techniques, and build confidence in professional interactions. The session encourages a generous, strategic approach to building meaningful connections that can support long-term career development.

*All*

## **THREE MINUTE THESIS (3MT™) FINAL - AUDIENCE REGISTRATION**

*Wed 17 June 10.00-12.00*

Watch outstanding DPhil researchers compete to explain their thesis in just three minutes, using only one slide. Come be inspired, learn something new, and support brilliant researcher students as they showcase their work to a public audience.

*All*

## **ADVANCED PRESENTATION SKILLS**

*Tue 23 June 09.30-12.30*

This interactive session supports experienced presenters who want to elevate their delivery and impact. Participants explore how to read a group, respond to challenging situations, use humour effectively, and tailor content to diverse audiences. The workshop also develops self-awareness, confidence, message clarity, and timing, enabling presenters to communicate memorably and with greater ease.

*All*

## **COACHING SKILLS FOR LEADERS**

*Wed 24 Jun 09.30-13.00*

This interactive workshop introduces core coaching concepts and practical techniques that strengthen leadership and management practice. Participants explore when and how to use coaching in everyday conversations, from feedback to career development, and practice a structured coaching dialogue using real workplace examples. The session helps leaders build stronger relationships and support others' growth with clarity and confidence.

*DPhil*

## **DPHIL BOOTCAMP: TOOLS, SUPPORT AND STRATEGIES FOR DPHIL SUCCESS**

*Thu 25 June 09.30-16.00*

Designed for new doctoral students in MPLS, this interactive in-person workshop supports a confident start to the DPhil. Participants explore sustainable work habits, productivity, supervisor communication, resilience, uncertainty and professional networks, helping them manage research effectively, build support systems and connect present doctoral work with future career development.



All

## OPEN ACCESS FOR MPLS

Thu 25 June 10.00-11.00

Researchers are often obliged by their funders to publish work open access.

Open access publications are free for anyone to read — and often to reuse — helping to maximise the visibility, reach, and potential impact of your research. But varying publisher policies, licensing choices, funder mandates, and cost models can make the landscape feel complex. This session will break everything down clearly and practically.

RS

## LEADING COLLABORATION - BRINGING PEOPLE TOGETHER TO ACHIEVE THE EXTRAORDINARY

Wed 8 Jul 10.00-15.00

This masterclass helps participants understand what makes research collaborations energising or challenging, drawing on neuroscience to illuminate how people connect and work together. Through practical models and group discussion, attendees diagnose issues in their own collaborations and identify clear actions to improve them, leaving with strategies to lead collaborative projects with greater clarity, confidence and impact.

# MPLS TIMETABLE TRINITY TERM

DATE	TIME	COURSE TITLE	TYPE	FOR
20th Apr 26	16.00-17.00	SeedWISE - Induction		DPhil Women
22nd Apr 26	12.00-14.00	Optimise Your Time at Oxford		RS
27th Apr 26	10.00-16.00	SeedWISE - Day 1		DPhil Women
28th Apr 26	09.30-12.30	How to Peer Review Journal Papers		RS
30th Apr 26	10.00-12.00	3MT™ Training		DPhil
5th May 26	09.30-13.30	Thesis and Report Writing		All
5th May 26	10.30-11.30	Being an Effective Bystander		All
7th May 26	09.30-12.30	Interviewing for Podcasts		All
11th May 26	09.30-12.30	Exploring and Overcoming Imposter Phenomenon		All
12th May 26	10.00 -11.00	Scopus Searching for MPLS		All
12th May 26	10.30-11.30	Cultivating Resilience and Self-Care for Ourselves and Others		All
12th May 26	12.00-14.00	GROW: Building Social Ventures: Lessons from Oxford University Innovation		All
13th May 26	09.30-12.30	Get that Fellowship		All
13th May 26	14.00-15.30	Non-Medical Systematic Reviews - Part 1		All
14th May 26	10.00-11.00	Difficult Conversations and the Importance of Giving and Receiving Feedback		All
18th May 26	10.00-16.00	SeedWISE - Day 2		DPhil Women
20th May 26	14.00-15.30	Non-Medical Systematic Reviews- Part II		All
21st May 26	09.30-17.00	Scientific Writing: Core Skills		All
21st May 26	09.30-16.30	Podcast your Science		All
26th May 26	09.30-12.30	Introduction to Presentation Skills		All
27th May 26	09.30-16.00	Project Management: The Essentials		All
27th May 26	14.00-16.00	RisingWISE - The Researcher's Path to Venture Leadership		All Women
28th May 26	10.00-16.00	Telling Stories that Matter: Communicating Your Research Through Story		All
1st Jun 26	10.30-12.30	Academic Writing with AI - Session 1		All
2nd Jun 26	09.30-17.00	Scientific Writing: Getting Your Paper Published		All
2nd Jun 26	12.30-14.00	Research Data Management		All
2nd Jun 26	14.00-16.00	Stakeholder Mapping for Academic Policy Engagement		All
3rd Jun 26	09.30-13.00	Get that Job		All
4th Jun 26	09.30-11.00	How to Prepare for a Career Development Review for Reviewees		RS
8th Jun 26	10.30-12.30	Academic Writing with AI - Session 2		All
8th Jun 26	10.00-16.00	SeedWISE - Day 3		DPhil Women
9th Jun 26	10.00-13.00	Viva Preparation and Practice		DPhil
9th Jun 26	14.00-17.00	You and Your Supervisor		DPhil
10th Jun 26	09.30-12.30	Get that Fellowship		All
10th Jun 26	10.00-12.00	Time Management		All
11th Jun 26	14.00-15.00	Getting Started in Public and Community Engagement with Research		All
15th Jun 26	10.30-12.30	Academic Writing with AI - Session 4		All
16th Jun 26	09.30-12.30	Completing your DPhil		DPhil
17th Jun 25	09.30-15.00	Networking: A Strategic Approach		All
17th Jun 26	10.00-12.00	3MT™ Final - Audience Registration		All
22nd Jun 26	10.30-12.30	Academic Writing with AI - Session 4		All
23rd Jun 26	09.30-12.30	Advanced Presentation Skills		All
24th Jun 26	09.30-13.00	Coaching Skills for Leaders		All
25th Jun 26	09.30-16.00	DPhil Bootcamp: Tools, Support and Strategies for DPhil Success		DPhil
25th June 26	10.00-11.00	Open Access for MPLS		All
8th Jul 26	10.00-15.00	Leading Collaboration: Bringing People Together to Achieve the Extraordinary		RS

## KEY

RS: research staff, post-docs or early career researchers.  
 DPhil: DPhil students or post-graduate researchers. All: All researchers.



In Person



Online

